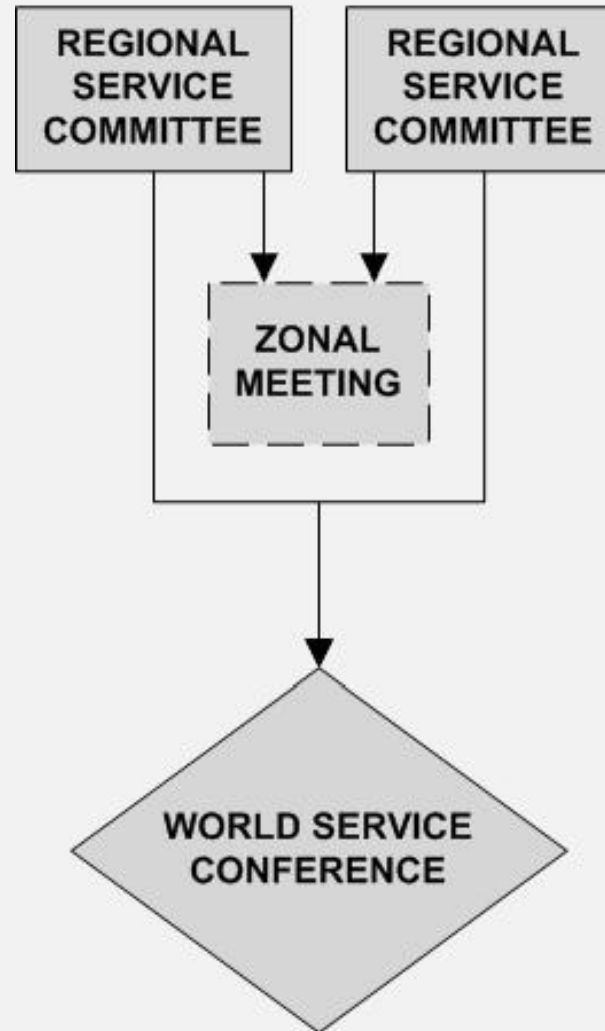


Service System Structural Proposals

**Options for World
Service Conference
Seating**

EXISTING SERVICE STRUCTURE



Existing Structure

- Existing regions may consist of some or all of a state, province, or country
- Some existing regions consist of multiple states, provinces, or countries
- Zones currently have a discussion forum role
- Some zones provide some services



Challenges & Solutions

Challenges:

- **Growth of the WSC is not limited, creating resource and manageability problems**

Solutions:

- ***An upper limit of seated communities is set by the number of existing state, national, and provincial bodies or by the number of seats allocated to each zone***



Challenges & Solutions

Challenges:

- There are no consistently applied seating criteria

Solutions:

- *Objective criteria are used to establish eligibility before any other criteria are examined, removing the personal element of seating decisions*



Challenges & Solutions

Challenges:

- **The lack of clear seating criteria is one factor that can encourage regional splits, which impacts our ability to deliver services and reach addicts**

Solutions:

- ***State/nation/province seating will encourage regional reunification***



Challenges & Solutions

Challenges:

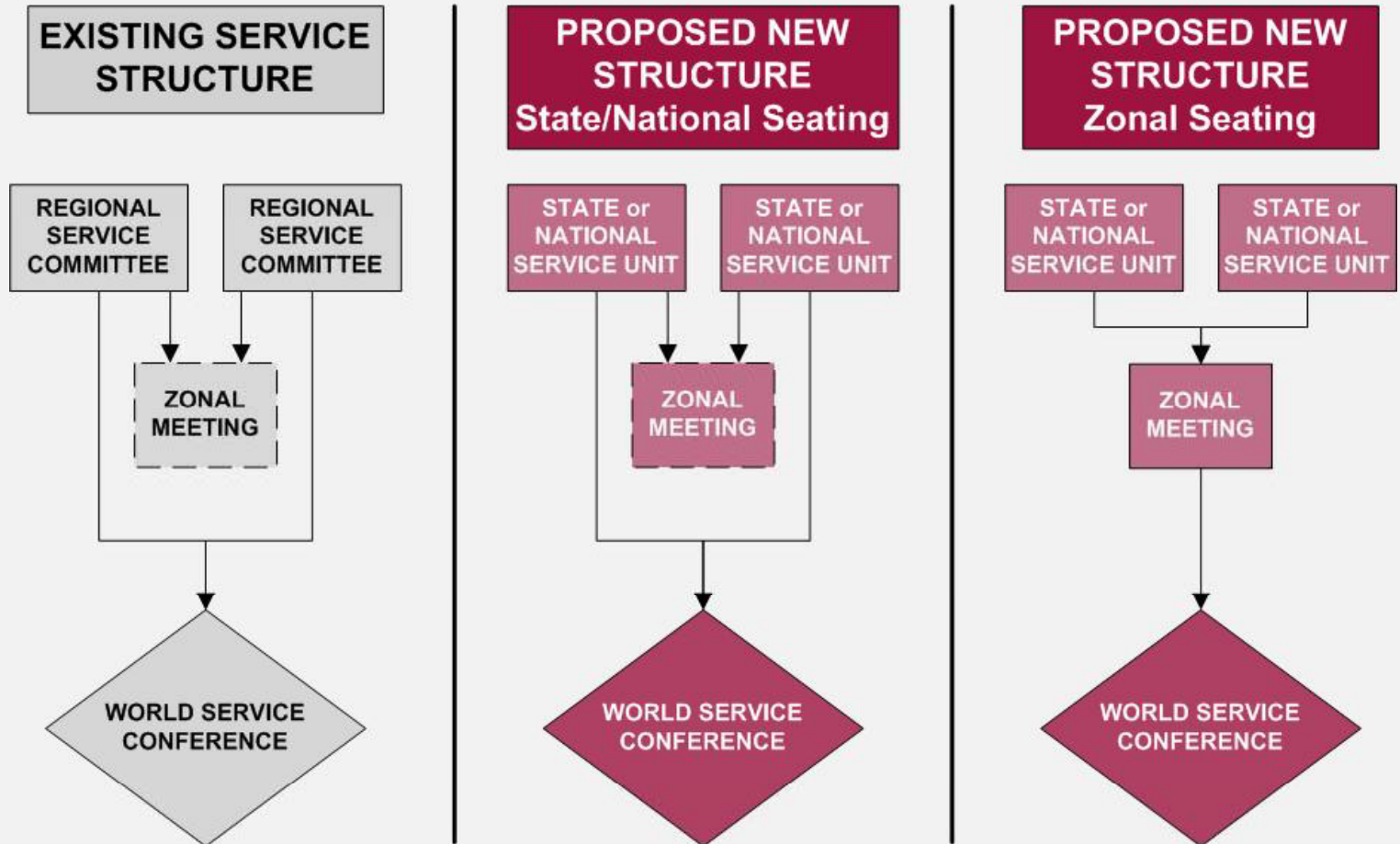
- **There is a perceived inequality between US and other countries**

Solutions:

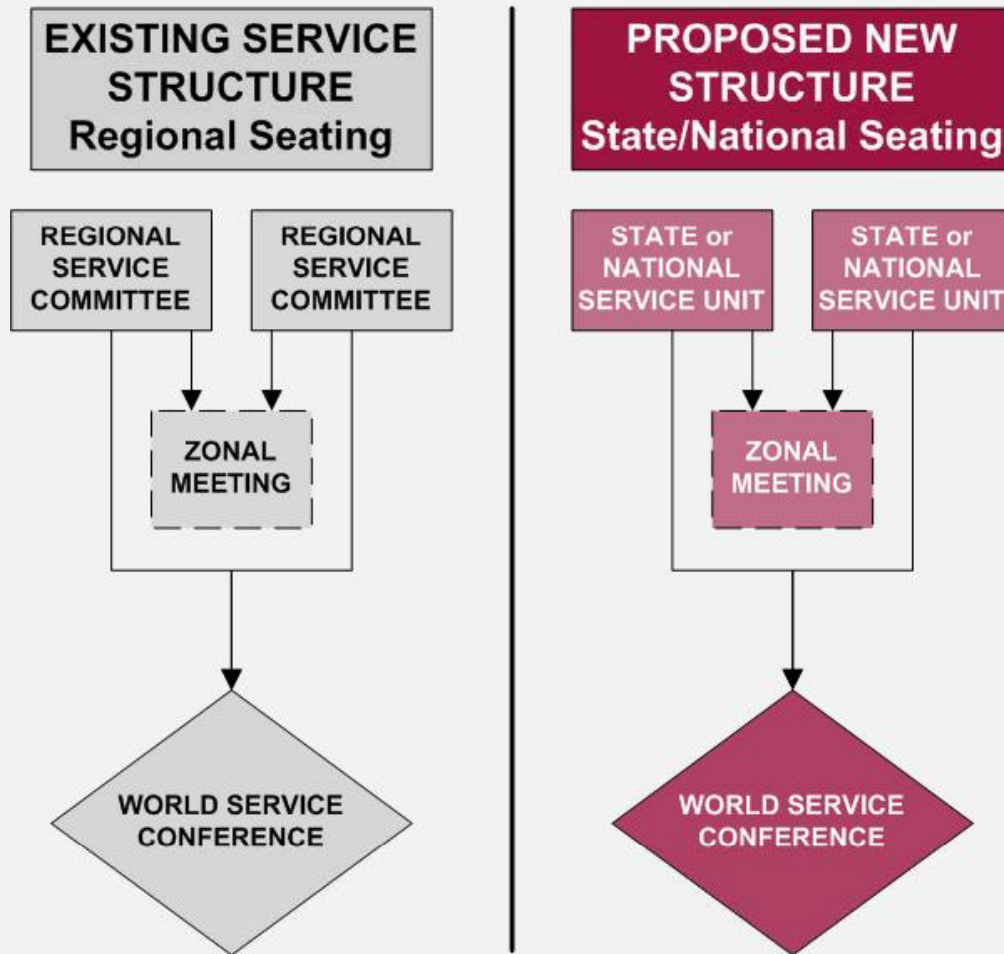
- ***The number of US delegates will be reduced in both seating models***



Existing and Proposed Seating Options



State/National Seating Option

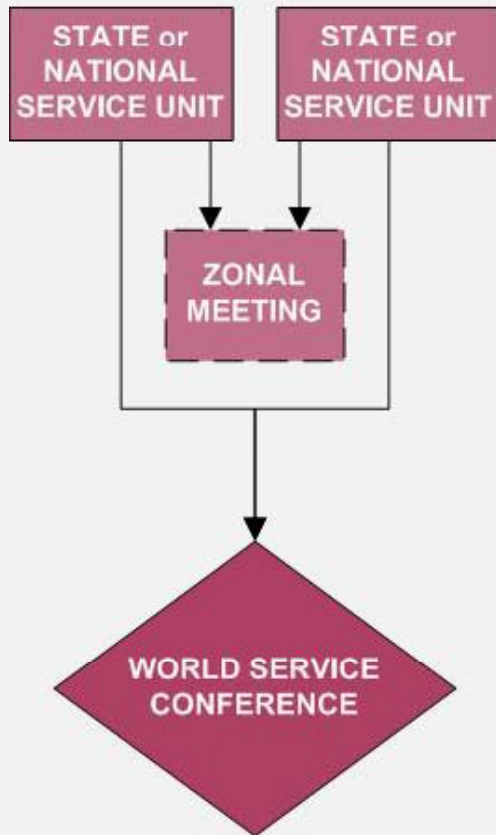


Delegates are selected from the state/national service bodies to participate in the WSC



State/National Seating Option

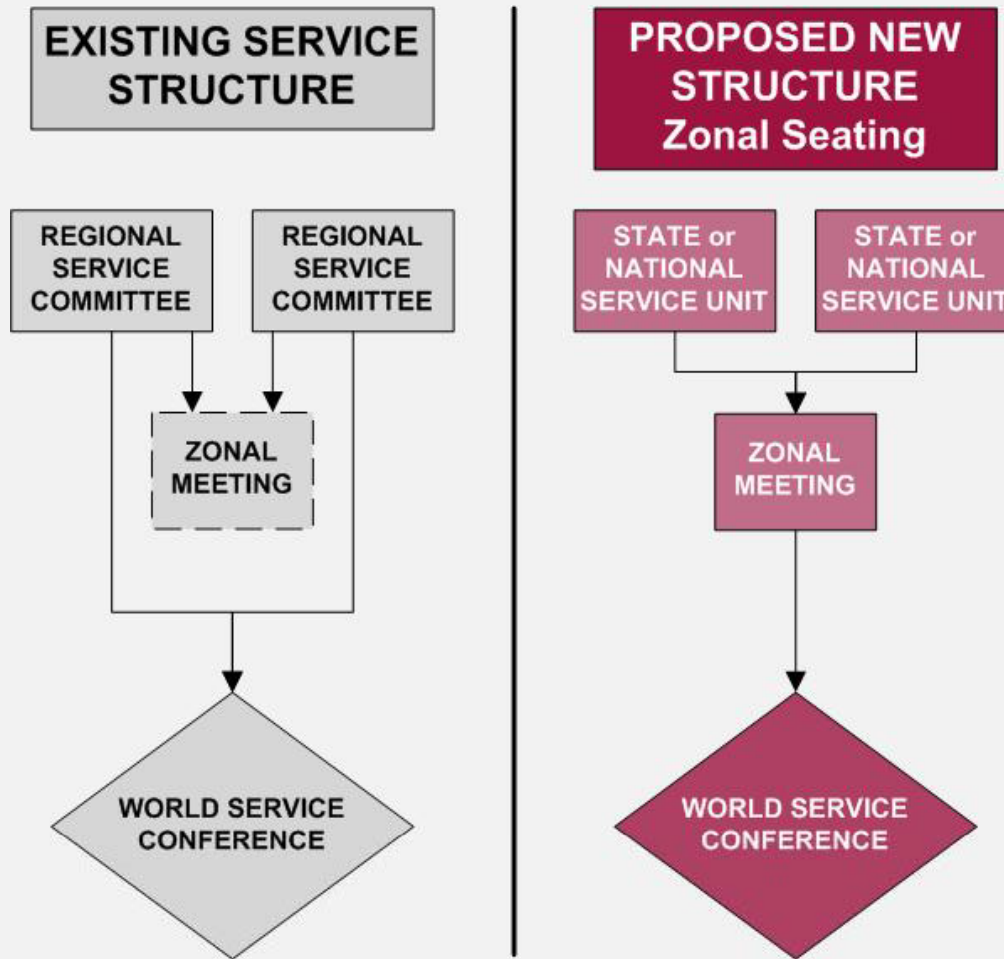
**PROPOSED NEW
STRUCTURE
State/National Seating**



- Slows growth of WSC
- No change for some, big change for others
- Establishes clear objective requirement for seating
- Encourages reunification and therefore provision of statewide services



Zonal Seating Option



Delegates are selected from the zonal service bodies to participate in the WSC



Zonal Seating Option

**PROPOSED NEW
STRUCTURE
Zonal Seating**

STATE or
NATIONAL
SERVICE UNIT

STATE or
NATIONAL
SERVICE UNIT

ZONAL
MEETING

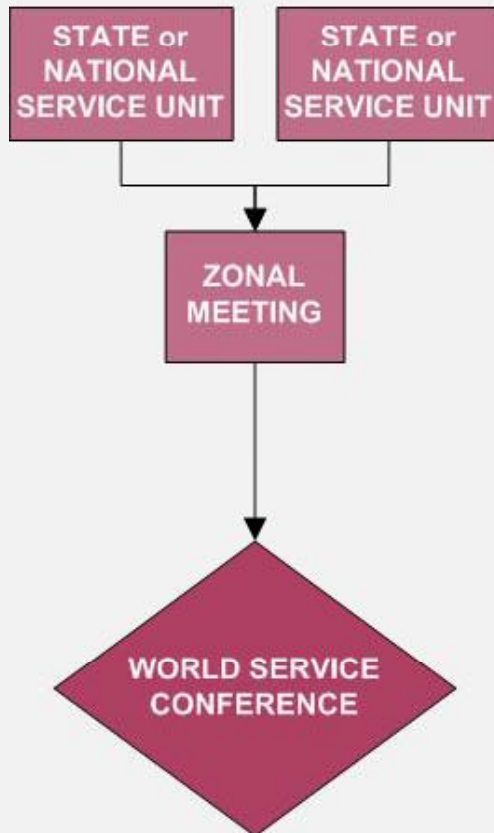
WORLD SERVICE
CONFERENCE

- Could significantly reduce the size of the WSC depending on the number of seats allocated to each zone
- Zonal boundaries determined by WSC
- No alternates at WSC



Zonal Seating Option

**PROPOSED NEW
STRUCTURE
Zonal Seating**



- **Changes the current role of zones**
- **Method of selecting delegates as yet undetermined**
- **Possible unforeseen circumstances such as decentralization of services**



Discussion Questions

State/National Seating

Picture applying this model at what is now the regional and zonal level:

- *What excites or concerns you about the effect these changes would have on the functioning of state-, province-, or national-level service in your community?*
- *In what ways do you see this model providing a more effective voice or pipeline of communication between your community and world services?*



Discussion Questions

Zonal Seating

Picture applying this model at what is now the regional and zonal level:

- *How would these proposals help you to maintain what is positive in our current system about zones, or improve the functioning of your zone?*
- *What excites you or concerns you about the effect these changes would have on the functioning of your zone?*
- *In what ways do you see this model providing a more effective voice or pipeline of communication between your community and world services?*

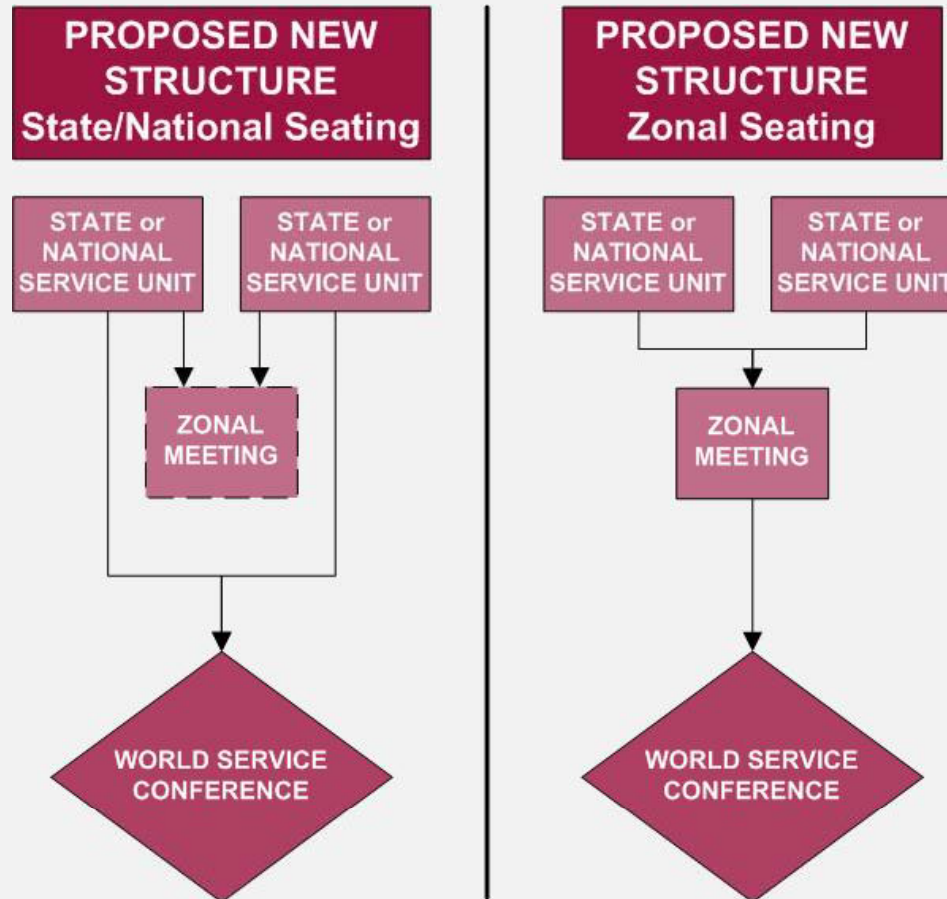


Small Group Discussion Questions

State/National Seating and Zonal Seating



Straw Poll



Do you think one of these two options, zonal or state/national seating, is preferable?



Call to Action

To stay involved, visit the project page at

<http://www.na.org/servicesystem>

- » **Submit your input by 31 Dec. 2010**
- » **Get project updates**

